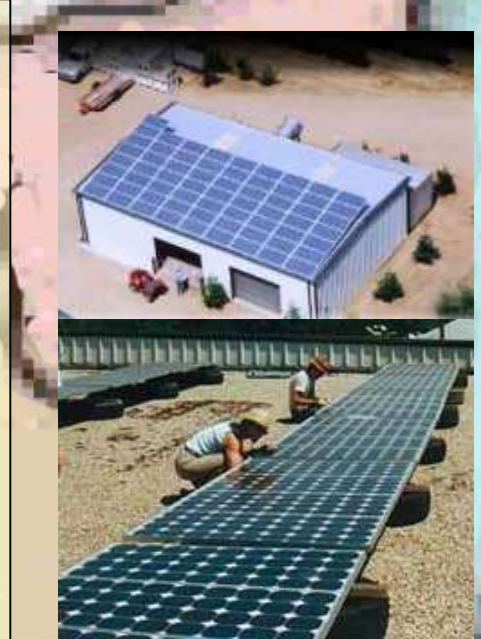


DESERT REGION

CORE COMPETENCE

- * Rich tourism initiatives
- * Handicraft based cottage industries
- Export potential for Brass & Silverware
- Large Marble & Redstone deposits
- Large Cotton yarn based industries
- First export promotion industry park
- * Milk and Dairy Products



RAJ, North GUJARAT

Challenges

- * Drought and very Vast Dry Land
- Maintenance of Rajasthan Canal (desilting)
- Water & Electric power connectivity

NEEDS & MISSIONS **500 PURAs**

- * Dry land cultivation thro' drip irrigation & sprinklers
- * Large scale Solar farming (Multi acres for Mega Watts power)
- * BAIF model for Cattle, horse & camel breeding
- Value addition

GANGETIC PLAIN REGION



CORE COMPETENCE

- * Mineral resources
- Agriculture
- * Steel Industry
- Tribal Heritage
- * Tourism
- Value addition to mineral wealth
- Manufacturing



UP, BI, JAR, North ORI, MP, CHAT, WB

Challenges

- * Flood havoc
- * Less thrust towards Primary Education
(60-70% Dropout)
- Large urban-rural divide
- Physical connectivity

NEEDS & MISSIONS

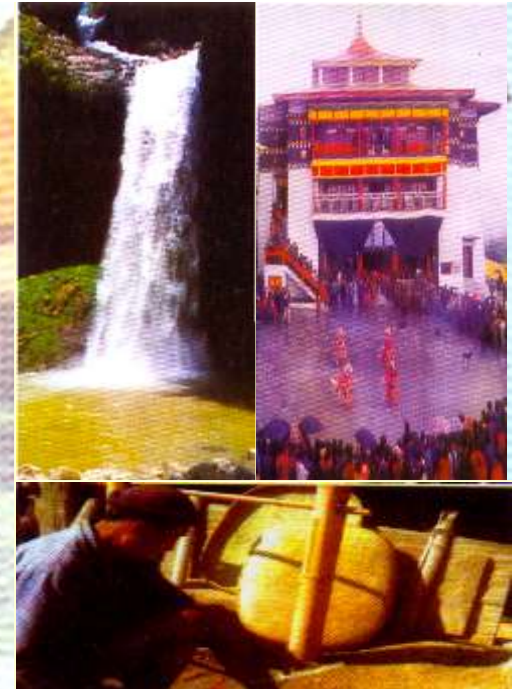
2700 PURAs

- * Evolve a permanent solution to harness flood water thro' large size layered wells
- Compulsory education (I – X)
- BAIF model for rural dev.
- Employment generation scheme for tribal population
- * Himalayan eco-tourism, Religious Tourism
- Industrial estates (Small Scale)

NORTH-EASTERN REGION

CORE COMPETENCE

- * Bio-diversity
- * Floriculture & Horticulture
due to agro climatic conditions
- * Eco Tourism
- Mineral wealth - *remains unexplored*
- * Hydel Resources
- Handicrafts, Cottage industries
- Harnessing Flood



AS, MEG, NAG, MANI, ARUN, TRI, MIZ, SIK

CHALLENGES

Hills

- * Access & Connectivity
- Untapped Bio-diversity
- * Societal instability in certain regions

Plains

- Worsening flood situation

NEEDS & MISSIONS

300 PURAs

Hills

- * Hydel power generation & distribution
- * Value addition to bio-diversity leading to drugs & medicines
- Water storage thro' layered wells
- Bamboo – infrastructure
- Oil and Gas

Plains

- Infrastructure & Connectivity